

Hope Through Help & Healing



**SARPY
DISASTER
RECOVERY**

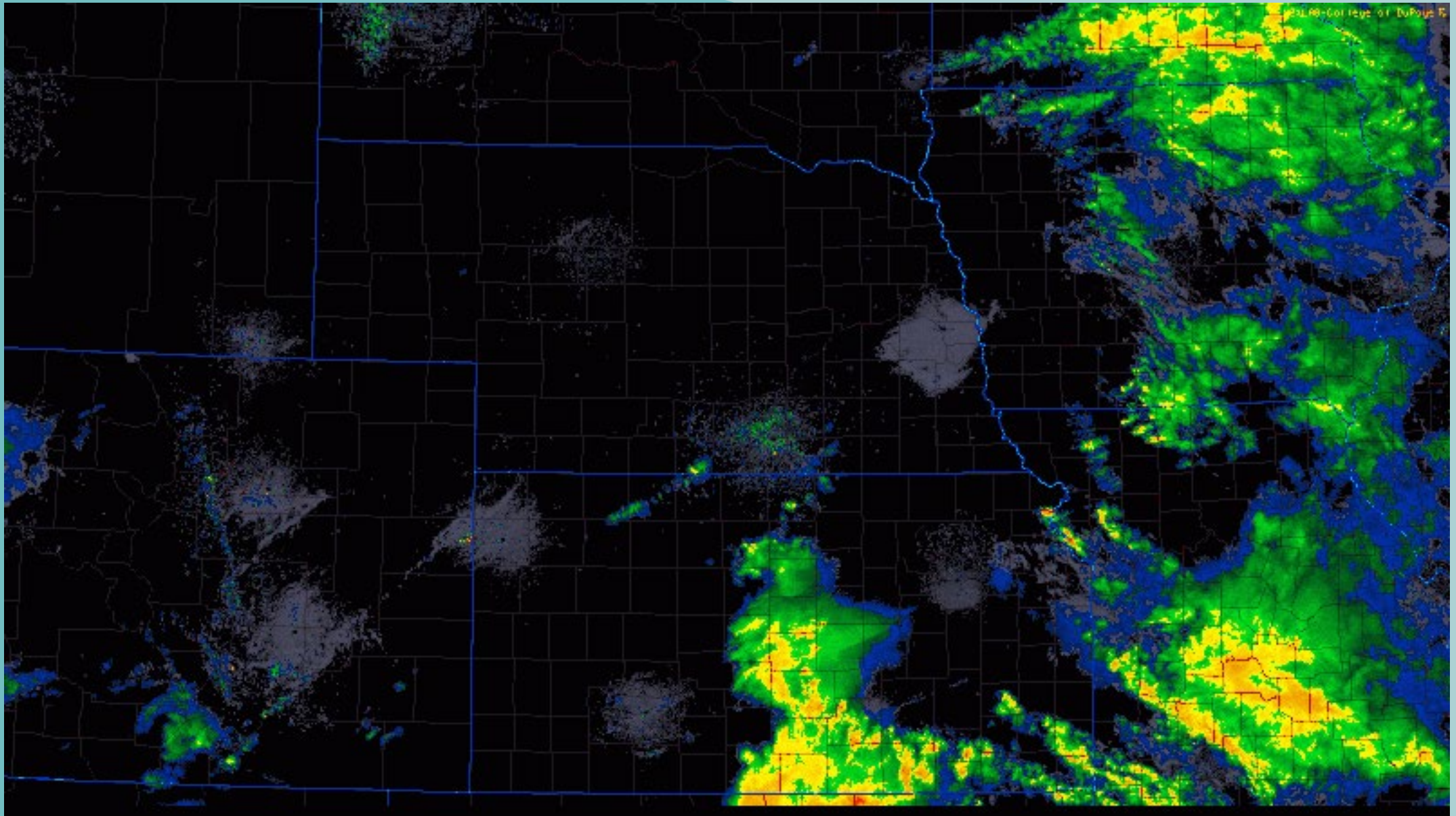
March 2019 Floods

Seven “F’s” of the Sarpy Disaster Recovery

*Hope
Through
Help
and
Healing*

- 1) Flood
- 2) First Steps
- 3) FEMA
- 4) Formation
- 5) Focus
- 6) Finish
- 7) Forward





Radar loop from approximately 3 PM March 12th to 7PM March 14th shows the multiple rounds of rain, followed by a band of snow with blizzard conditions.

Graphic courtesy of Hastings, NE
Weather Forecast Office

FLOOD



399 Homes Lost
365 Homes Damaged

10 Farmhouses

339 Mobile Homes

365 Homes Damaged

183 Minor Damage

182 Major Damage

~1400 Households affected
1013 Households- LTRG
920 Families Contacted
375 cases closed

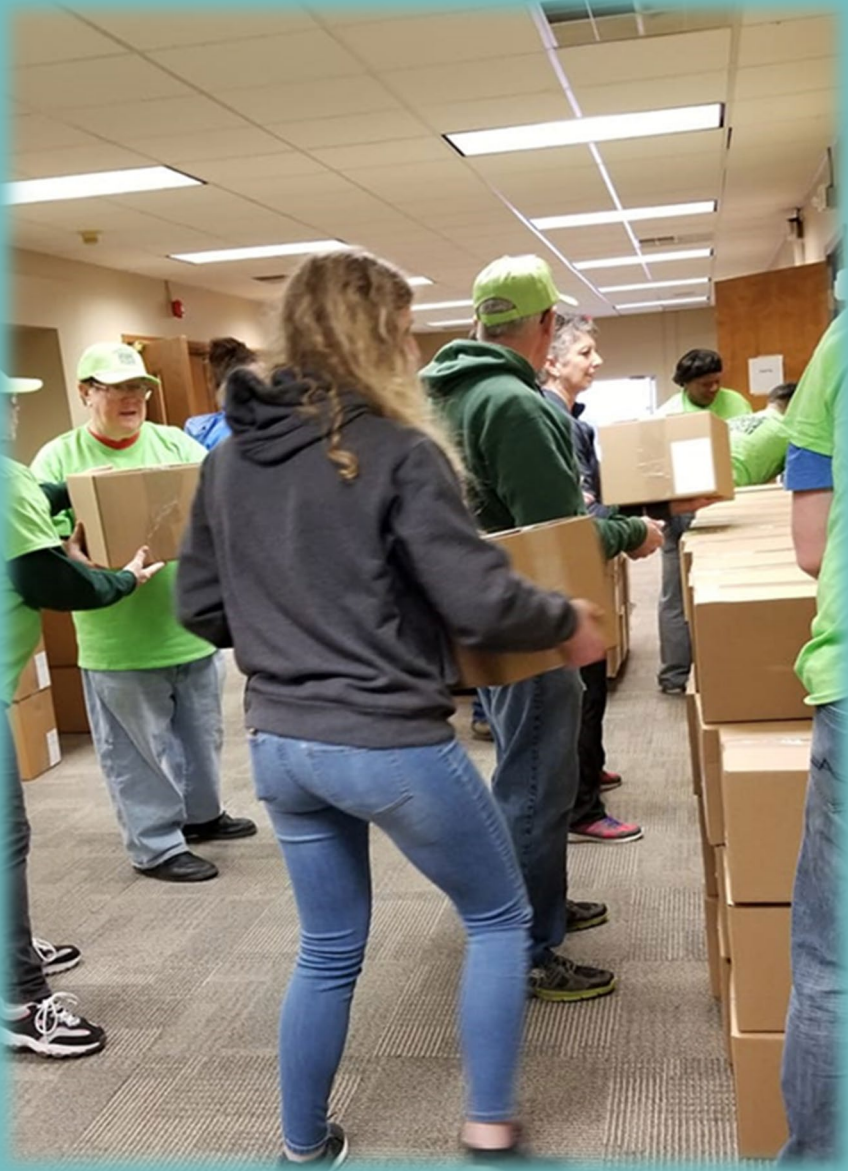


FLOOD

Overview of Missouri River Flooding Before and After



FLOOD



March 17, 2019

Local churches, Red Cross, Salvation Army, and dozen of other agencies proactively start to react to the needs.

Real stories, real loss & real examples of strong Nebraskans!

1400 households affected.
People first, paperwork second!

FIRST STEPS

Sarpy County Long-Term Disaster Recovery FIRST STEPS

First informal meeting
March 18, 2019

- Local Church
- 50 nonprofits, government agencies and faith-based organizations.
- Nightly meetings
- No "Turf Wars!"
- Housing, food, Semi of food, cleaning supplies, clothes, laundry, etc.

FIRST STEPS

Disaster Recovery/Relief Coordination Meeting
Monday, March 18, 2019, at 7:00 PM
St. Mary's Catholic Church, 811 W 23rd Ave, Bellevue, NE 68005

Prole
SawA

Join the Sarpy Recovery online group by visiting <https://groups.io/g/SarpyRecovery/>.

Agenda

1. Introductions
2. Discussion Items
 - a. Mass Care *MSVE/Process*
 - b. Donations Management
 - c. Volunteer Management
 - d. Case Management
 - e. Long-Term Recovery
 - f. Clean-up Assistance
 - g. Public Information
3. Future Meetings
4. Any Other Business

SALVAGE FEMA
LABORERS - CONTRACTORS
CASH IS KING
CLOTHES - VOUCHER ???
EMERGENCY / OPERATIONAL CASE
Hygiene
KROG COLN - How/when needed
NEED FOR INTER-AGENCY - NEED STAFF FOR KROG

TO BE DONE IN FUTURE

Notes

IMMEDIATE NEEDS →
B.C.C. → Baby Items, TOILETRIES, FOOD, TABLES, VOLUNTEERS
30-40
8-10/week
BPS-30
51-1st Party
33 - C. CHRISTMAS
13 - C.B. SHERMAN
10. NAKAI@HAWAII.COM
SPRINGFIELD →
WY - 7-9am - MARKS
CLOTHES - REWARDS
MARK - FOOD HEALTH SERVICES Sarpy County Health Dept.

Coln @
LET'S MOVE / HAS HOME CLEANUP
EMERGENCY / PATH
TOILET FIXTURES
MARK RUSSELL
MINI SPANNS FLESH MAR 2019
MARK RUSSELL
CALL CENTER → Remote PC + MIC
833-556-2476
MK - 9:50am
GET Registered as church → GIVE ACCESS TO TAKE WORK OR THEN DO CLEANUP → CLEAN WORK
ALL CLEANUP IS FREE
NO GUARANTEE
1 Person VETED VET OWN

FEMA VAL arrived ~mid-May and was scheduled to be there until August.

Transitioned out mid-June.

LTRG not fully formed.

- **MARC opened early April**
- **DRC was opened until end of May**
- **Local churches donated over \$1 million in furniture, appliances and mattresses through the end of May**



Sarpy County Long-Term Disaster
Recovery

Official: July 29, 2019

Donations

Fiscal Sponsor

Sustainability



Hope
Through
Help
and
Healing

501c3 or not?

Surveys

Training

FORMATION

1001 Households
affected

900+ Families
Contacted (91%)

375 Households
served

90- Priority 1



Risk Indicators

Household with children
under the age of 18

Household with members
over the age of 65

Living in unsafe conditions

Recovering from a previous
disaster

Household with access and
functional needs

Household experienced
loss of income due to the
floods

Household members
displaced

Isolated geographically,
socially, culturally

Damage to residence is
under/uninsured

Basic urgent needs not
able to be met (food,
water, Shelter)

English is not primary
language

Household is experience
significant emotional
distress

Single head of household

Medical needs are not able
to be met

Reported Needs

- Functional biological needs
- Adult education/Job Training
- Benefits Access and Restoration/FEMA
- Domestic animal assistance/Pet food/Vet bills for goat living inside family home
- Emotional/Spiritual care
- Employment & Benefits
- Financial Services
- Food/Nutrition
- Funeral Assistance
- Household Furniture/Appl.
- Household storage
- Housing-Permanent-Relocation
- Housing-Permanent-Reconstruction/Repair
- Housing-Temporary
- Housing-Storage
- Landlord/Mortgage Co.
- Legal Assistance
- Medically-Related needs (nebulizers, wheelchairs, medications, etc.)
- Mental Health
- Mold Remediation
- Residential Clean out/Debris removal
- Transportation
- Utilities- sewer reconstruction, electrical indoor plumbing, wood, propane, etc.
- Birth Certificates, SSI, Disability, Tribe Verification, Wills, Death Benefits, etc.
- Air fryer, toaster oven & NFM!

FOCUS

Challenges

Locating Families

Building Trust

Language barriers

Willingness to engage (budget,
needs vs wants, etc.)

FEMA (MARC, Process, etc.)

Sense of entitlement

Slow response

Housing

Landlords

Mental Health

Physical Health

Covid-19

Fraud

Duplication of Benefits

Domestic Violence



Emotional
Highs

FOCUS

Honeymoon
Community Cohesion

Reconstruction
A New Beginning

Heroic

Pre-Disaster

Disillusionment

Warning

Threat

Impact

Setback

COVID-19

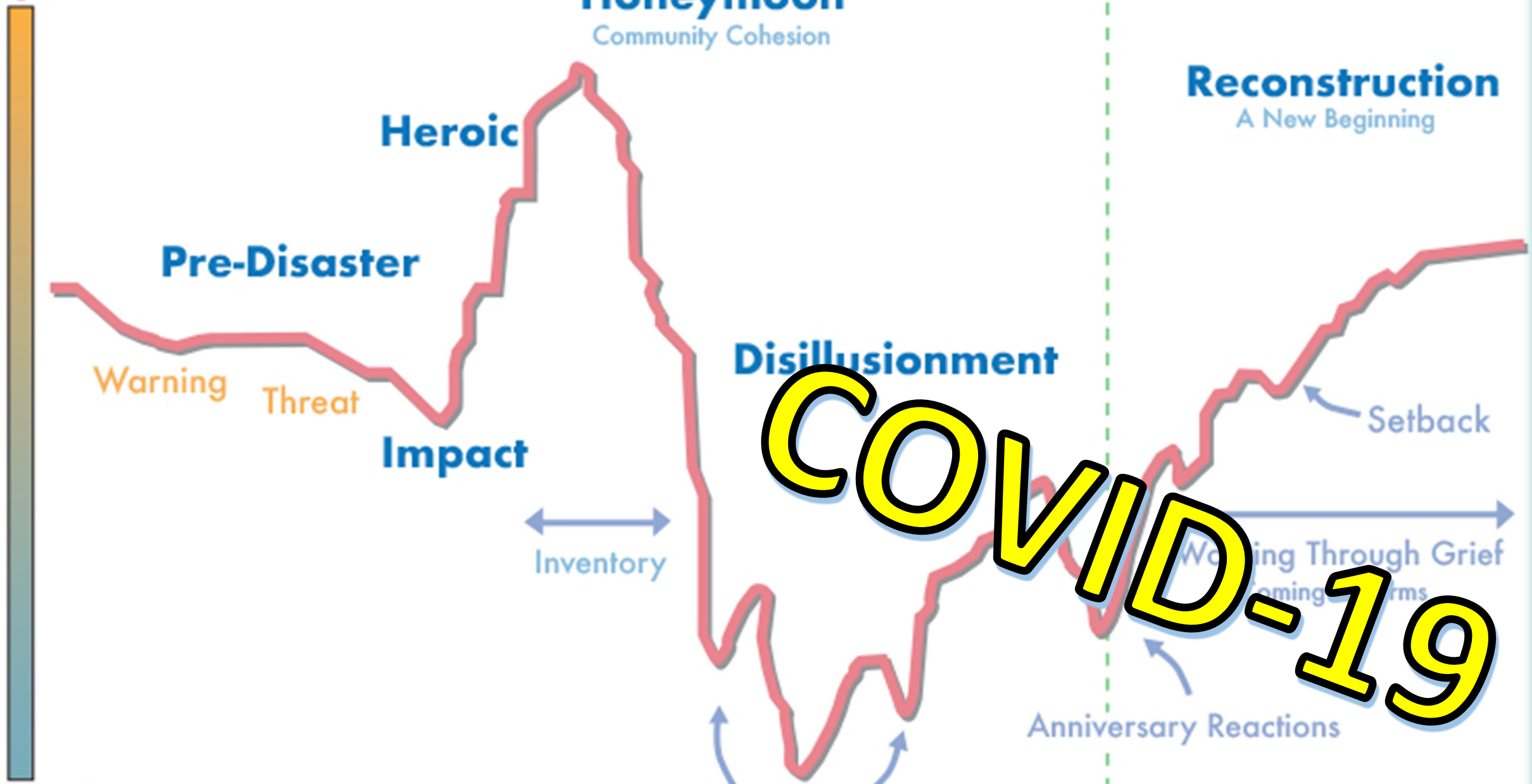
Inventory

Working Through Grief
Learning Terms

Emotional
Lows

Trigger Events

Anniversary Reactions



Cost to Nebraska?

\$2.6 Billion (\$1.1B Offutt AFB)

Cost to families?

- Homes & Cars
- Security (Jobs, physical)
- Health (Physical & Mental)
- Memories
- Future
- Peace of Mind
- Hope

Cost to Community?

- Security/Trust
- Housing
- Tax Base
- School Attendance
- 40% of Survey respondents moved out of Sarpy County



Agencies/Activities/Zoom/Etc.

Sarpy Disaster Recovery Involvement- COAD

Monthly Long-Term Recovery Group Meeting

Weekly Executive Committee Meeting

Governor's Task Force Local impact

Governor's Task Force on Food Security

Governor's Task Force on Housing

Great Plains Mental Health Conference

FEMA conference

Sarpy County Housing Group

Sarpy County Food Strike Force

NCFF Food and Housing

Cass County Support/Training

Fremont County Iowa Support/Training

Nemaha County Support/Training

Michigan floods Midlands County

Cedar Rapids Flood Support

Kiwanis Club

Volunteer local food pantry Food Bank for the Heartland

Lift Up Sarpy County

Statewide Navigators Weekly Zoom

Lift Up Sarpy Bellevue, Papillion, Gretna, Springfield

Community Response

Governor's Task Force on COVID-19

NCFF toolkit for COVID-19 and Long-Term Recovery Groups (LTRGs)

Community coalition of Papillion

Synergy Mental Health Webinar

NIFA Tiny Housing Webinar

Homeless Solutions for Sarpy County

Just Serve conference

NEVOAD

National VOAD

COAD

Gretchen Swanson's Center for Nutrition Research Project

NCFF Sarpy Recovery activities

Lift Up Sarpy Steering Committee

Busting Barriers

Community Cares Response and Recovery Grant

Omaha Bridges Out of Poverty

FINISH → FORWARD

COAD

Listen

Learn

Lead



Blue Sky
Preparation

FORWARD

Community Partners/COAD



FINISH & FOUNDATION



Jeff Weaver
jeff@sarpydisasterrecovery.org



General Email Address
ltrg@sarpydisasterrecovery.org



Direct Line
Cell: 402-981-3294



Phone Number
Main Office: 402-885-8589



www.sarpydisasterrecovery.org



Hope Through Help & Healing



**SARPY
DISASTER
RECOVERY**